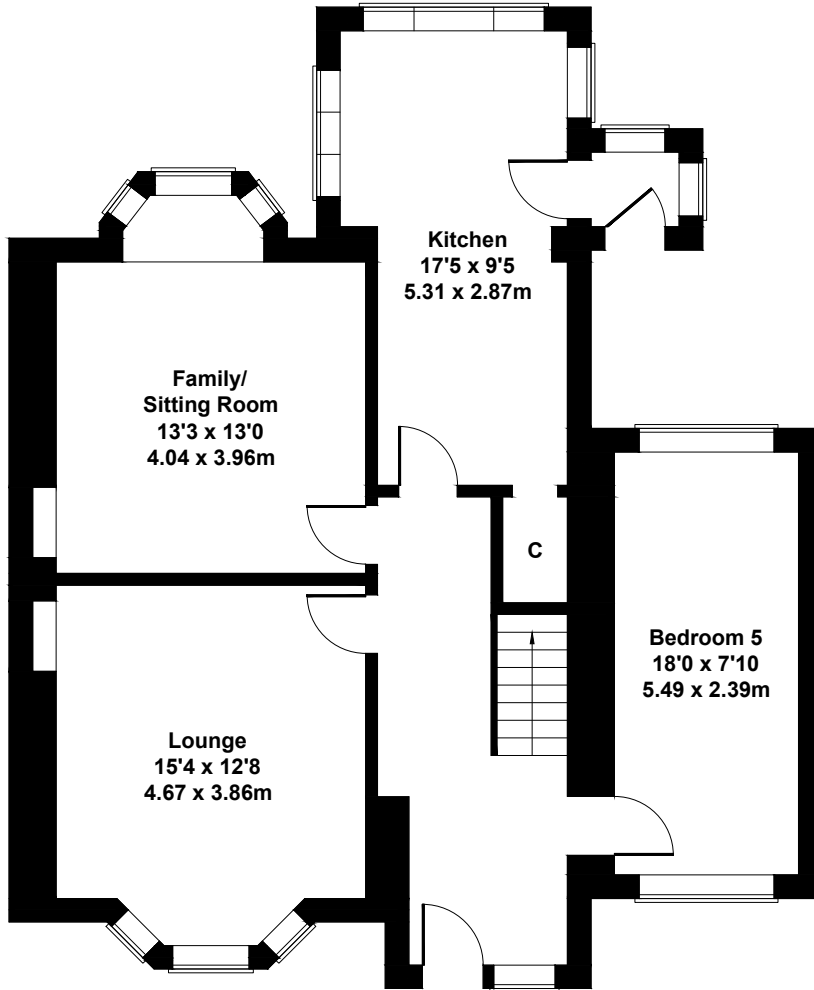


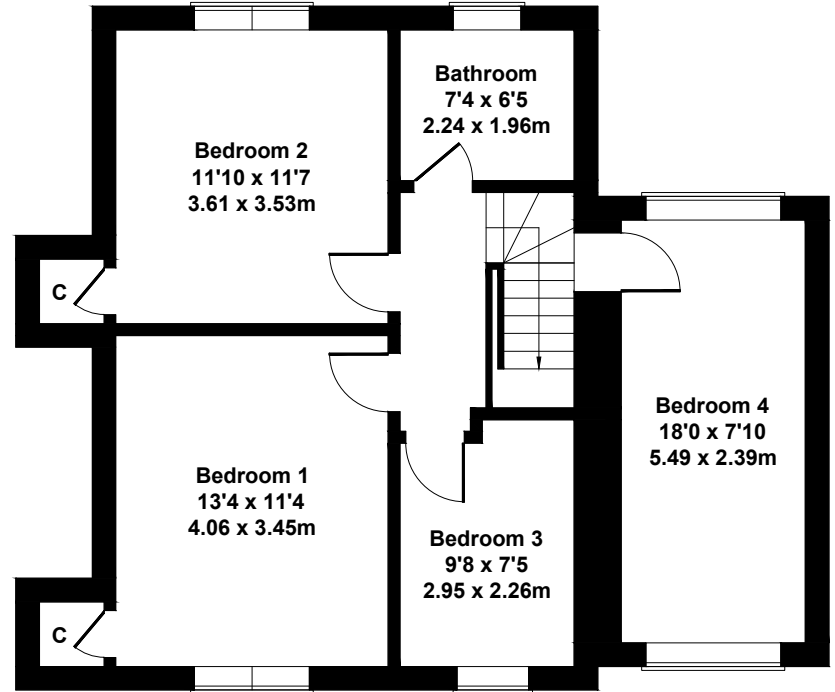
# 18 Kingussie Drive, Kings Park, Glasgow G44 4HY

Approximate Gross Internal Area

1644 sq ft - 153 sq m



**GROUND FLOOR**



**FIRST FLOOR**

### SKETCH PLAN FOR ILLUSTRATIVE PURPOSES ONLY

All measurements walls, doors, windows, fittings and appliances, their sizes and locations, are approximate only. They cannot be regarded as being a representation by the seller, nor their agent.